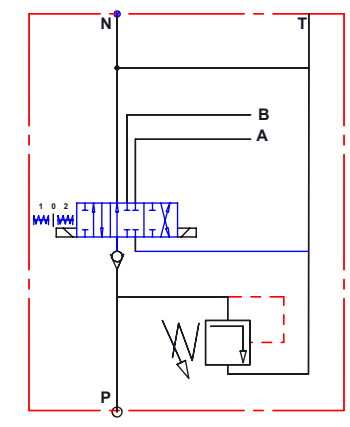
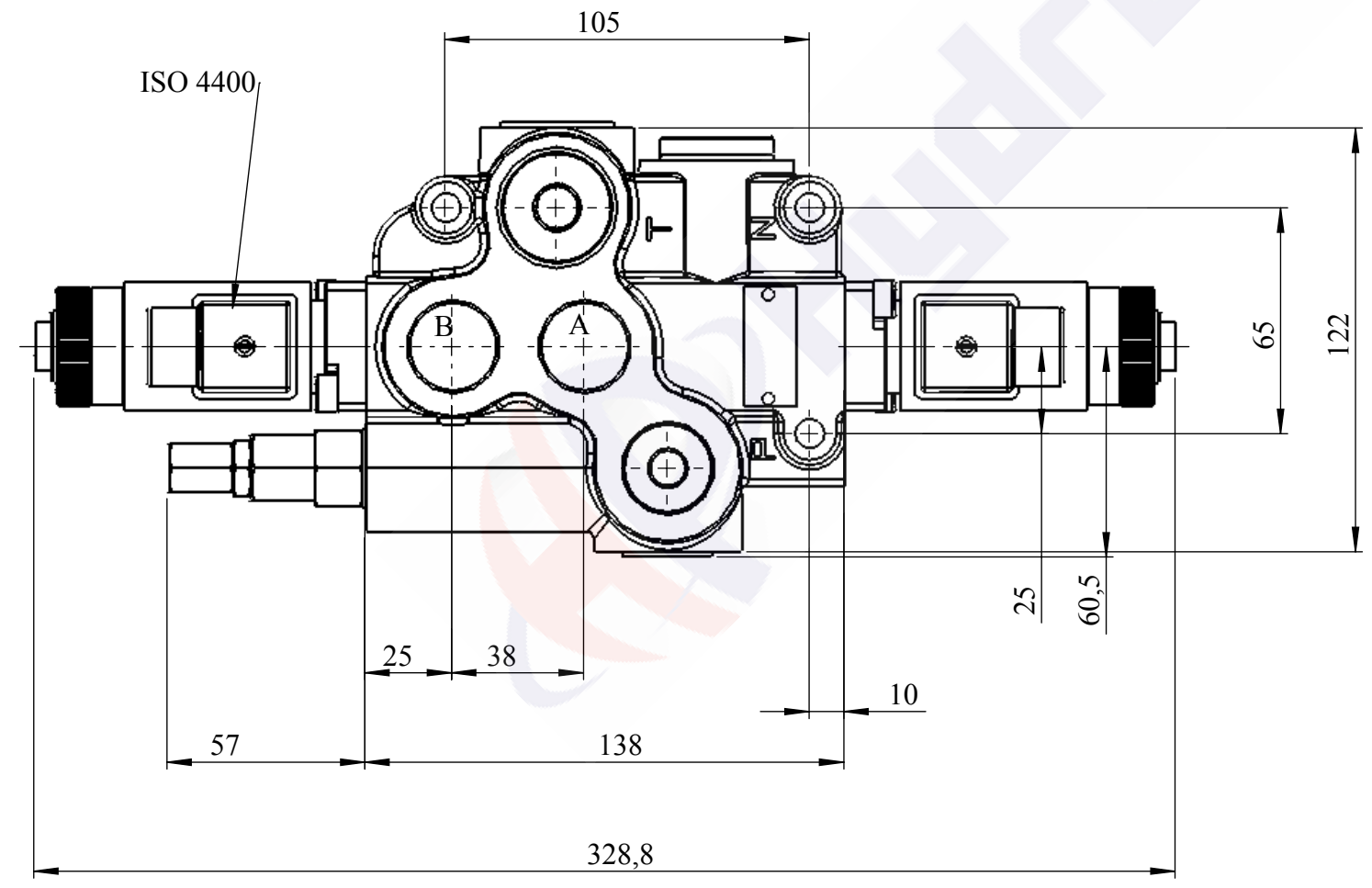


Nominal flow rate - max 80 l/min - see operating diagram
 Operating pressure:
 port P - max 250 bar at 25 l/min; max 160 bar at 80 l/min
 ports A, B - 300 bar
 port T - <50 bar

Port threads: P, A, B - G1/2
 Port T, N - G3/4

Working conditions
 Recommended Oil viscosity range 10 to 100 cSt
 Max. contamination: class 10 to NAS 1638
 19/16 - ISO 4406

24 VDC or 12VDC



sheet	1/1	description	weight (kg)
scale	1:5		
		Z80 AES3 G 24VDC	5.163

Drawn By		№
Checked By		